

REVISIONS				
ZONE	REV.	DESCRIPTION	DATE	APPROVED

QTY.	DESCRIPTION	PART NUMBER	ITEM NO.
4	HPR PVC LEG ASSEMBLY	DWR-LEG-001-1	3
1	1.0 TILTING RAIL MNT ASSEMBLY	DWR-RAIL-MNT-001-1	2
1	1.5 HPR PVC LAUNCH PAD	DWR-PAD-001	1

- NOTES:**
1. DIMENSIONING AND TOLERANCING PER ANSI Y14.5M-1994.
 2. BREAK SHARP EDGES - 0.003 TO 0.100.
 3. REMOVE ALL BURRS FROM PART.
 4. NO ADHESIVE USED, ALL MAJOR ASSEMBLIES REMAIN REMOVEABLE FOR TRANSPORT AND STORAGE PURPOSES.

NEXT ASSY	REQD	USED ON	DO NOT SCALE DRAWING
---	--	---	

UNLESS OTHERWISE SPECIFIED
DIMENSIONS ARE IN INCHES
TOLERANCES ARE:
FRACTIONS DECIMALS ANGLES
1/8 .XX 0.1 1°
.XXX 0.005

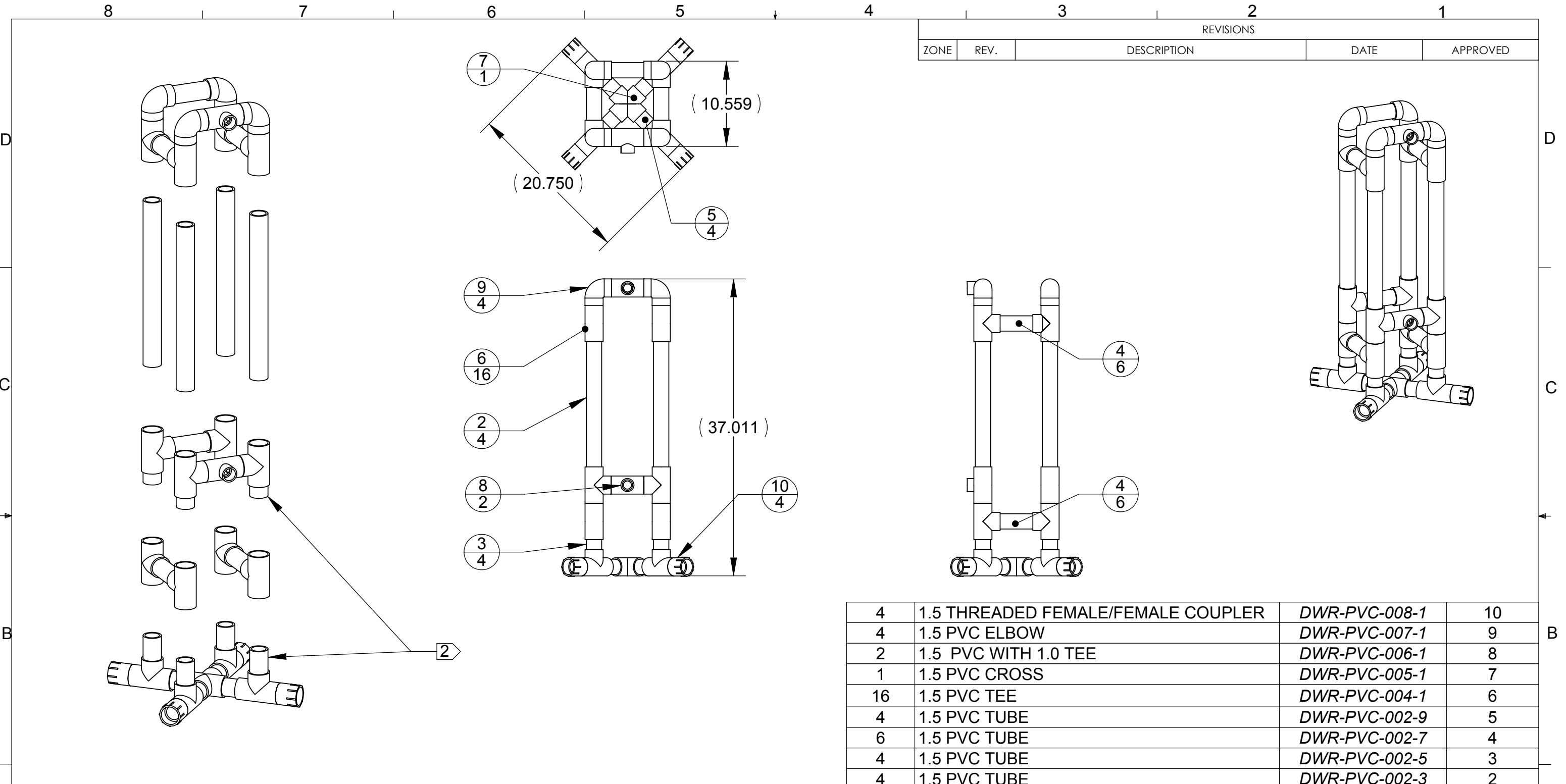
MATERIAL
N/A - ASSEMBLY
DRAWING

DESIGNED IN: SOLIDWORKS 2009	
APPROVED	DATE
DRAWN JSP	11/25/07
DESIGNED JSP	11/25/07
CHECKED JSP	11/25/07
MECH ENG JSP	11/25/07
PROJECT ENG JSP	11/25/07

DRAGONWORKS ROCKETRY
TONEY, ALABAMA

HPR PVC LAUNCH PAD ASSEMBLY

SIZE B	CAGE NO. 7L855	DWG. NO. DWR-HPR-PAD
SCALE: 1:32	SHEET 1 of 1	

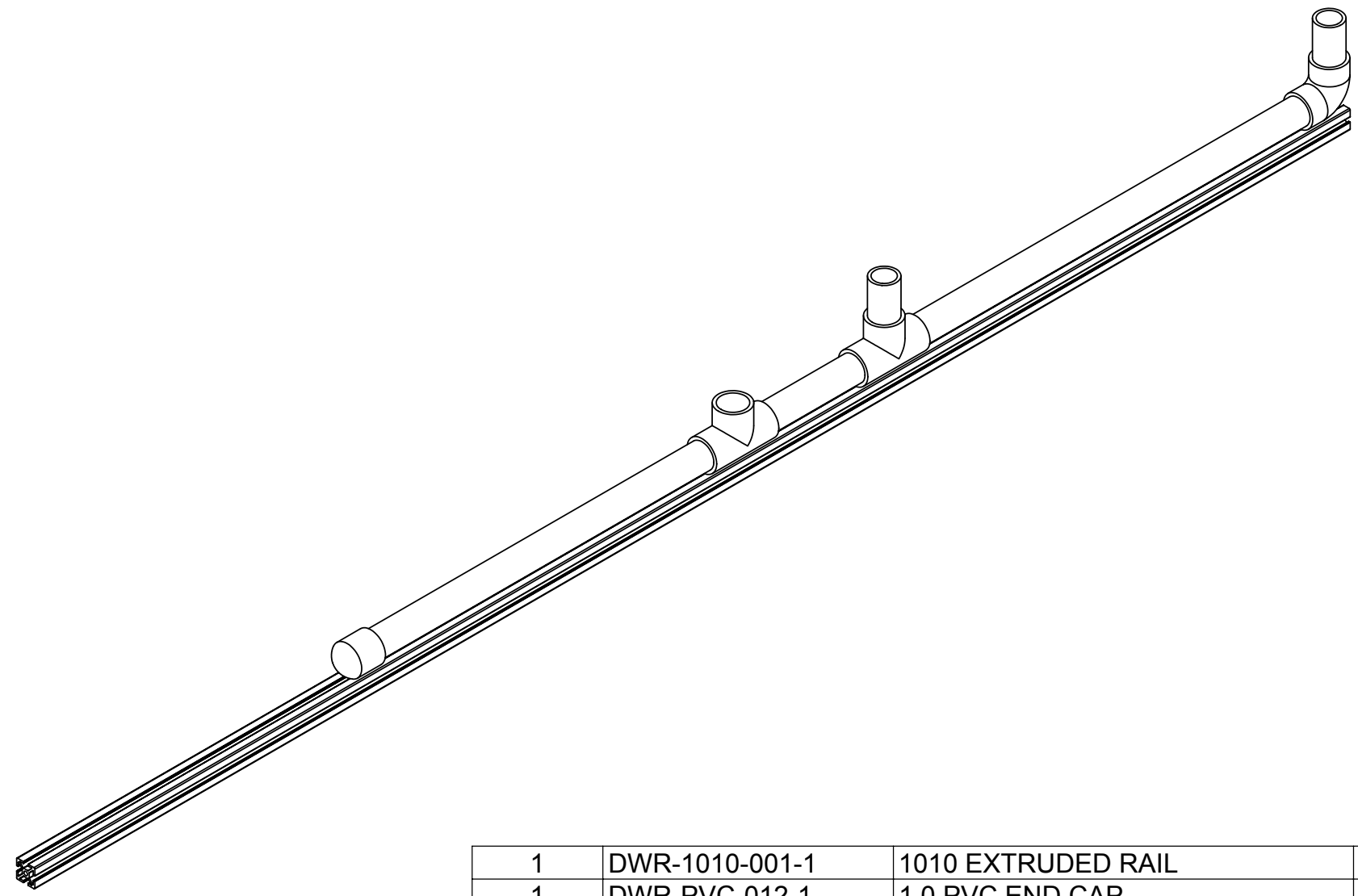
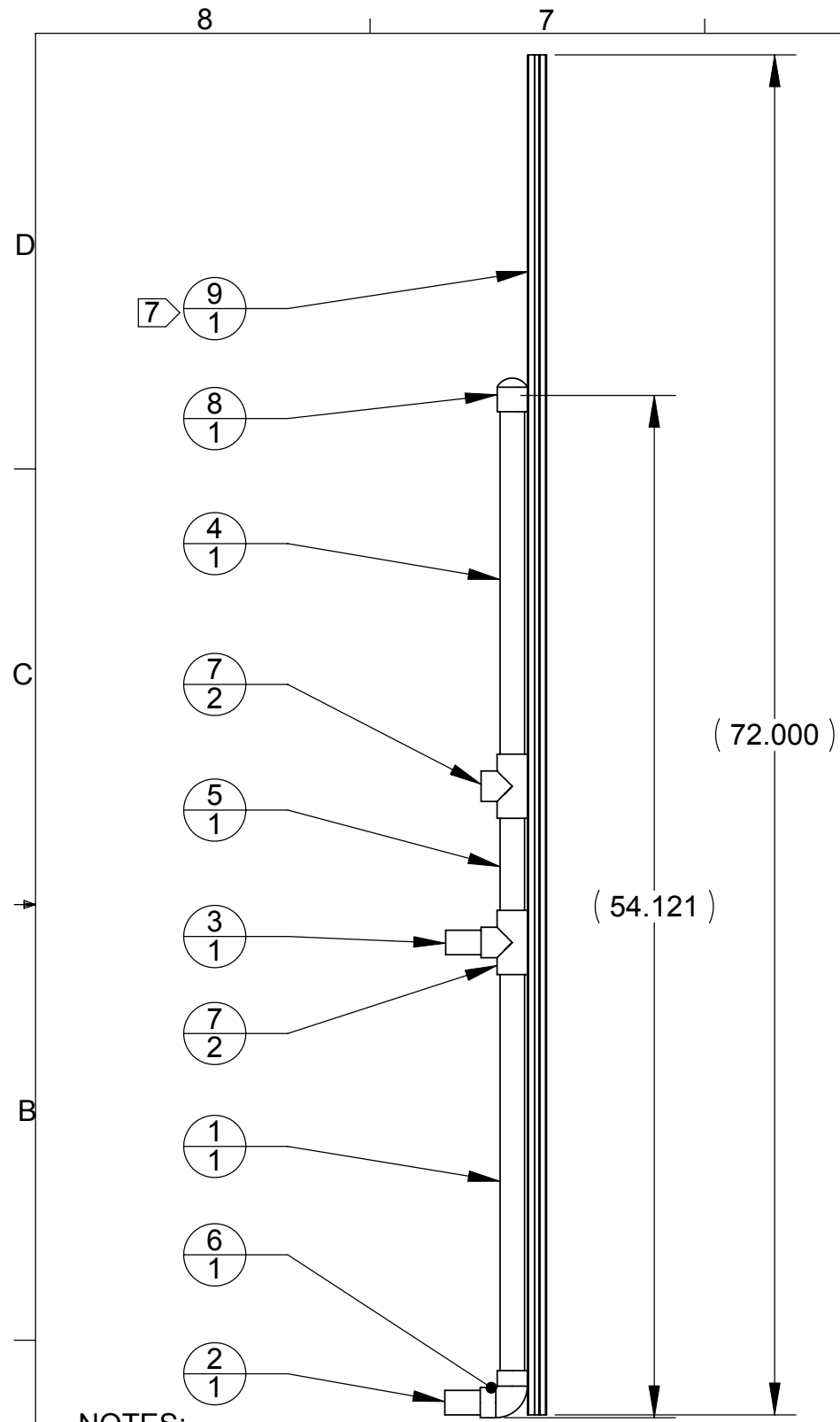


REVISIONS				
ZONE	REV.	DESCRIPTION	DATE	APPROVED

QTY.	DESCRIPTION	PART NUMBER	ITEM NO.
4	1.5 THREADED FEMALE/FEMALE COUPLER	DWR-PVC-008-1	10
4	1.5 PVC ELBOW	DWR-PVC-007-1	9
2	1.5 PVC WITH 1.0 TEE	DWR-PVC-006-1	8
1	1.5 PVC CROSS	DWR-PVC-005-1	7
16	1.5 PVC TEE	DWR-PVC-004-1	6
4	1.5 PVC TUBE	DWR-PVC-002-9	5
6	1.5 PVC TUBE	DWR-PVC-002-7	4
4	1.5 PVC TUBE	DWR-PVC-002-5	3
4	1.5 PVC TUBE	DWR-PVC-002-3	2
16	1.5 PVC TUBE	DWR-PVC-002-11	1

- NOTES:
- DIMENSIONING AND TOLERANCING FOR REFERENCE ONLY.
 - THE 2.5" TUBE, DWR-PVC-002-11, PART ARE USED AS COUPLING TUBES FOR THE ENTIRE ASSEMBLY.
 - ALL COMPONENTS ADHERED USING STANDARD PVC RESINS.
 - REMOVE ALL BURRS FROM PART.
 - ITEMS IN BOM ARE STANDARD 1.5" PVC COMPONENTS, PURCHASED AT ANY LOCAL HARDWARE STORE.

			UNLESS OTHERWISE SPECIFIED DIMENSIONS ARE IN INCHES TOLERANCES ARE: FRACTIONS 1/8 DECIMALS .XX 0.01 ANGLES 1° .XXX 0.005	DESIGNED IN: SOLIDWORKS 2009	DRAGONWORKS ROCKETRY TONEY, ALABAMA	
			MATERIAL	APPROVED	DATE	1.5 HPR PVC LAUNCH PAD
			N/A - ASSEMBLY DRAWING	DRAWN JSP	9/16/07	
				CHECKED JSP	9/16/07	SIZE B
				MECH ENG JSP	9/16/07	CAGE NO. 7L855
				PROJECT ENG JSP	9/16/07	DWG. NO. DWR-PAD-001
NEXT ASSY	REQD	USED ON	DO NOT SCALE DRAWING	SCALE: 1:12		SHEET 1 of 1



REVISIONS				
ZONE	REV.	DESCRIPTION	DATE	APPROVED

QTY.	PART NUMBER	DESCRIPTION	ITEM NO.
1	DWR-1010-001-1	1010 EXTRUDED RAIL	9
1	DWR-PVC-012-1	1.0 PVC END CAP	8
2	DWR-PVC-010-1	1.0 PVC TEE	7
1	DWR-PVC-011-1	1.0 PVC ELBOW	6
1	DWR-PVC-009-3	1.0 PVC TUBE - 7.375"	5
1	DWR-PVC-009-5	1.0 PVC TUBE - 20.375"	4
1	DWR-PVC-009-7	1.0 PVC TUBE - 3.125"	3
1	DWR-PVC-009-9	1.0 PVC TUBE - 2.125"	2
1	DWR-PVC-009-1	1.0 PVC TUBE - 23.25"	1

- NOTES:
- DIMENSIONING AND TOLERANCING FOR REFERENCE ONLY.
 - ALL PVC ITEMS ADHERED USING STANDARD PVC RESINS.
 - CUT TUBES AS STRAIGHT AS POSSIBLE.
 - REMOVE ALL BURRS FROM PART.
 - RAIL MOUNTING HARDWARE TO BE DETERMINED.
 - ALL PVC ITEMS ARE STANDARD PVC COMPONENTS PURCHASED FROM ANY HARDWARE STORE.
 - PURCHASED FROM 8020.COM

			UNLESS OTHERWISE SPECIFIED DIMENSIONS ARE IN INCHES TOLERANCES ARE: FRACTIONS 1/8 DECIMALS .X 0.1 ANGLES 1° .XX 0.01 .XXX 0.005
			MATERIAL
			N/A - ASSEMBLY DRAWING
NEXT ASSY	REQD	USED ON	DO NOT SCALE DRAWING

DESIGNED IN: SOLIDWORKS 2009	
APPROVED	DATE
DRAWN JSP	9/8/2007
DESIGNED JSP	9/8/2007
CHECKED JSP	9/8/2007
MECH ENG JSP	9/8/2007
PROJECT ENG JSP	9/8/2007

DRAGONWORKS ROCKETRY TONEY, ALABAMA 1.0 TILTING RAIL MNT ASSEMBLY		
SIZE B	CAGE NO. 7L855	DWG. NO. DWR-RAIL-MNT-001
SCALE: 1:2	SHEET 1 of 1	